



# Levels of Surface Preparation

Always talk to your customer before the job and make sure you're on the same page when it comes to the finish you'll be leaving, and charge accordingly.

There is no reason to blast a dumpster the same way you would a car, when the paint will be beat up in a week anyway. No reason to take a commercial truck frame all the way down to white metal when they are just trying to make it look new to sell it.

If you are unsure, note that coating manufacturers will often specify what surface preparation cleanliness level they recommend.

**PRICING NOTE:** A Brush Off Blast will be faster to achieve than a White Metal Blast, which can allow you to be more competitive with bids when necessary.

## 1 White Metal Blast

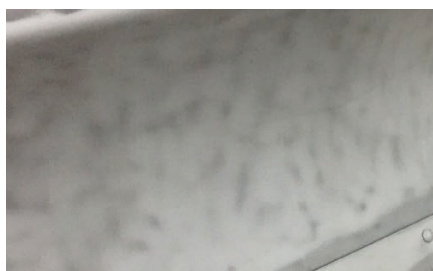
SSPC-SP5 | NACE No. 1



Free of all visible paint, rust, mill scale, stains, and foreign matter. Steel will actually be grey, not white.

## 2 Near White Blast

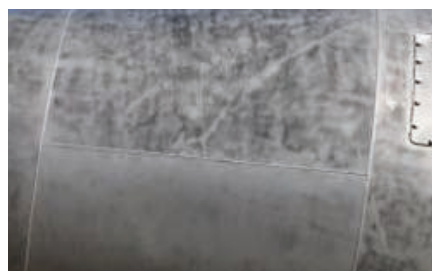
SSPC-SP10 | NACE No. 2



At least 95% of the surface should be bare metal, with no visible residue. Slight staining on metal is allowed.

## 3 Commercial Blast

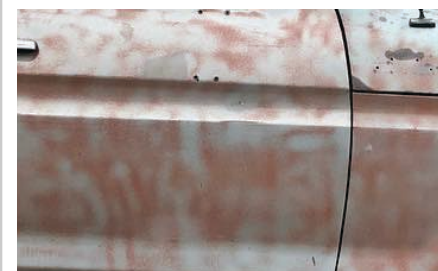
SSPC-SP6 | NACE No. 3



At least 2/3 of the surface should be bare metal, free of visible residue. Only tightly adhering coatings remain.

## 4 Brush-Off Blast

SSPC-SP7 | NACE No. 4



Only tightly adhering residues can stay. All loose rust, mill scale, and coatings must be removed.

## 1 White Metal Blast SSPC-SP5 | NACE No. 1



## 2 Near White Blast SSPC-SP10 | NACE No. 2



## 3 Commercial Blast SSPC-SP6 | NACE No. 3



## 4 Brush Off Blast SSPC-SP7 | NACE No. 4

